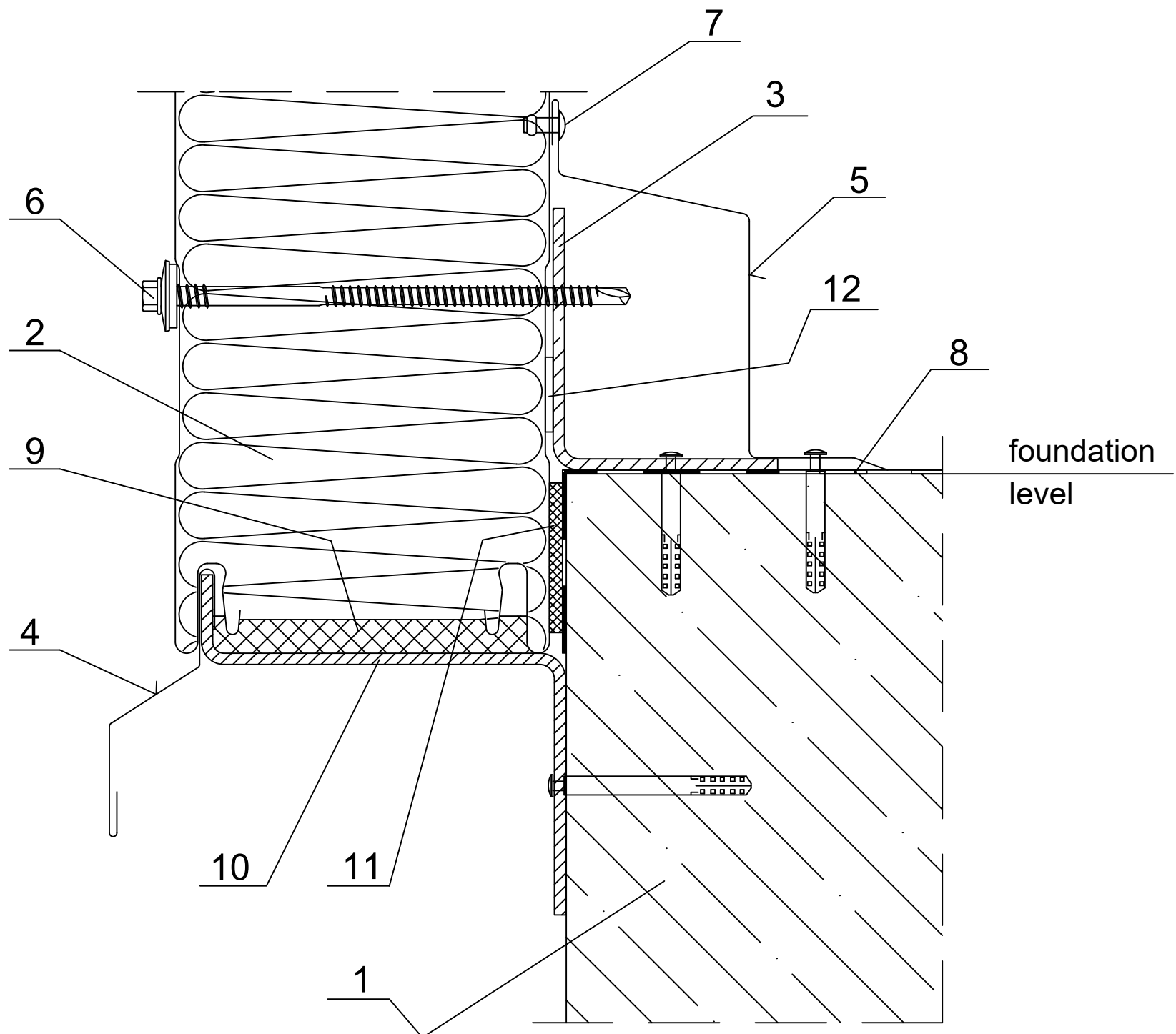


Date	Rev. date	Work nr.	Drw. nr.	Rev.
Drawn by Ruukki	Rev.	M27/S22	-	
Scale 1:2	Building		File nr. P2001/003-00039	



1. Ground beam acc. to engineering design of the structure
2. Ruukki SP2B PIR
3. Socle sheeting rail acc. to engineering design of the structure
4. Custom ordered drip
5. EA1B02 plinth flashing
6. Panel fastener for hot-rolled sheeting rail or for cold-bent sheeting rail
7. Steel rivet Al/Fe (every 300 mm)
8. Horizontal insulation acc. to architectural design of the structure
9. Polyurethane sealant (thickness 8 mm)
10. Socle beam acc. to engineering design of the structure
11. 8x40 PIR self-adhesive sealant
12. 4x20 PIR self-adhesive sealant